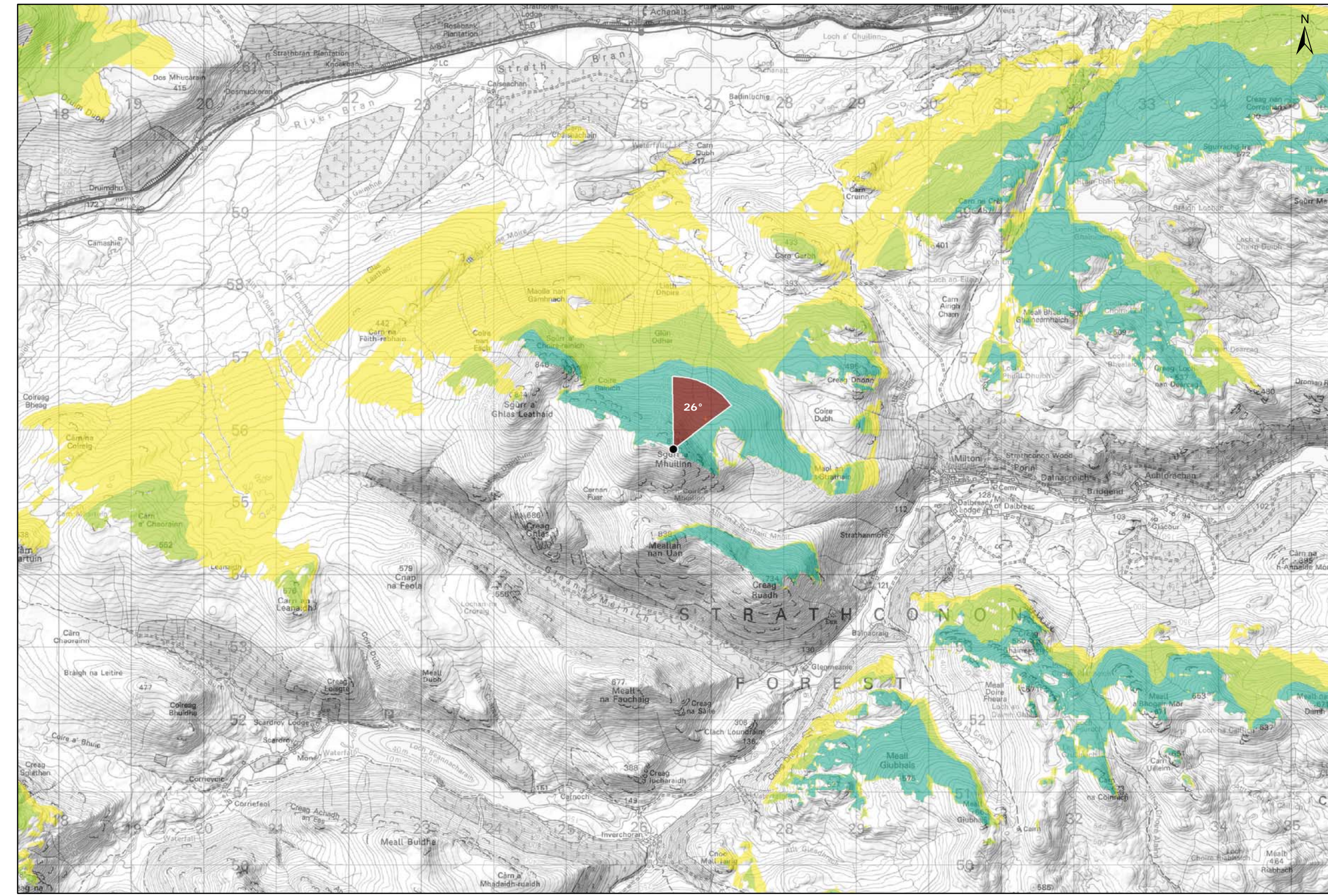
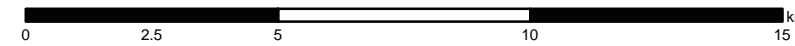
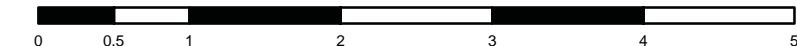


Viewpoint Location Plan Baseline Panorama
Scale: 1:150,000



Viewpoint Location Plan
Scale: 1:50,000 (Blade Tip ZTV)



Note:
 1. ZTV: Created using ESRI ArcGIS 10.5 software using the following data and parameters:
 Blade tip height: 133m
 DTM Data: OS Terrain 5 DTM. Resampled to a 10m grid.
 Observer height: 2m
 No surface features, such as buildings or trees, were included in the analysis.
 Earth curvature and light refraction has been included in calculations.

- Legend:**
- Proposed Turbines
 - Viewpoint Location
 - 90° Field of View Viewpoint
 - 53.5° Field of View Viewpoint

- Cumulative Wind Turbines
- Wind Farm Status (01/10/2018)**
- Wind Farm Status (01/10/2018)
 - Wind Farm Status (01/10/2018)
 - Consented
 - Operational; Under Construction

- Zone of Theoretical Visibility**
- No. of Turbines (133m) Visible
- 1 - 3
 - 4 - 6
 - 7 - 9

| | |
|-------------------|----------|
| Blade Tip: | 133m |
| DTM: | OS T5 |
| DTM resolution: | 5m |
| Observer height: | 2m |
| Surface features: | Excluded |
| Earth curvature: | Included |

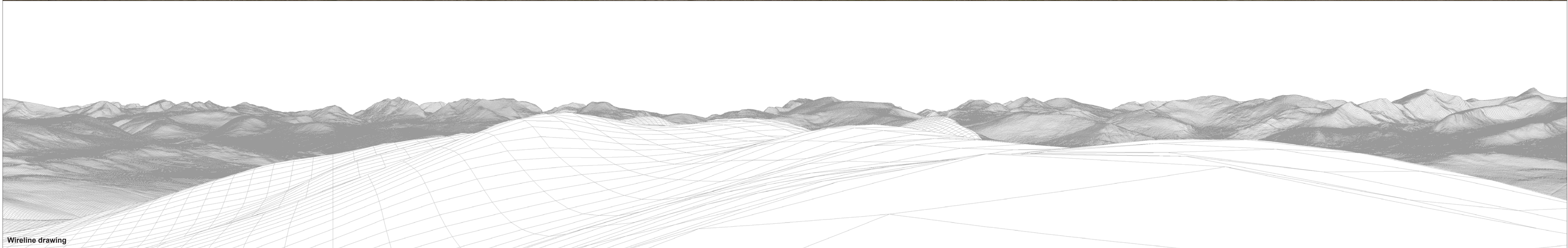
| | |
|--|-----------------------|
| Title: Figure 9.30a Viewpoint 10: Sgurr A Mhuilinn | |
| Lochluichart Wind Farm Extension II | |
| Source: © Crown copyright and database rights (2016) OS (license No 0100031673) | |
| Client: Infinergy | |
| Drawn by: MJF | Checked: JW |
| Date: 15/10/2018 | Figure: 9.30a |
| Scale: | Revision No: B |





Baseline photograph

This image provides landscape and visual context only



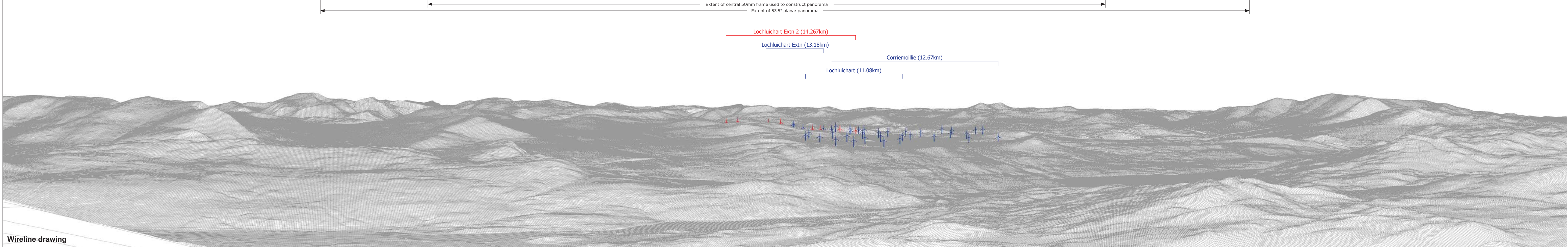
Wireline drawing

OS reference: 226466 E 855740 N
Eye level: 877.6 m AOD
Direction of view: 296°
Nearest turbine: 14.273 km

Horizontal field of view: 90° (cylindrical projection)
Principal distance: 522 mm

Camera: Canon EOS 5D Mark II
Lens: 50mm (Canon EF 50mm f/1.4)
Camera height: 1.5 m AGL
Date and time: 05/06/18, 11:04

Figure: 9.30b
Viewpoint 10: Sgurr a Mhuillinn



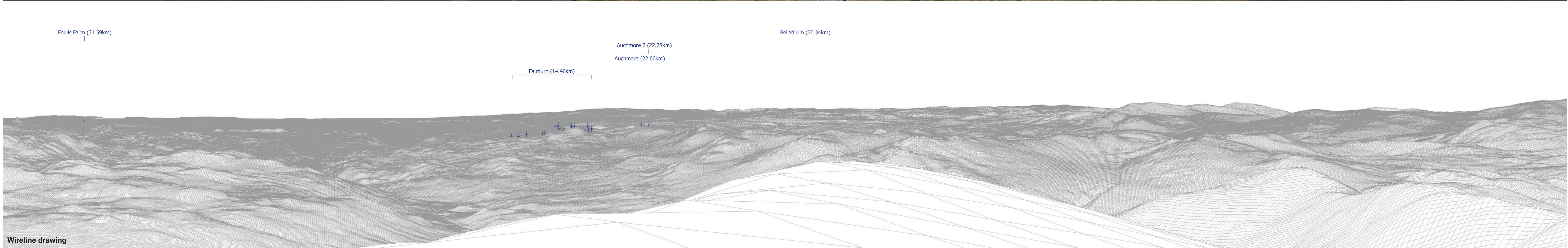
| | | | | | |
|---------------------------|-------------------|----------------------------------|------------------------------|-----------------------|----------------------------|
| OS reference: | 226466 E 855740 N | Horizontal field of view: | 90° (cylindrical projection) | Camera: | Canon EOS 5D Mark II |
| Eye level: | 877.6 m AOD | Principal distance | 522 mm | Lens: | 50mm (Canon EF 50mm f/1.4) |
| Direction of view: | 26° | | | Camera height: | 1.5 m AGL |
| Nearest turbine: | 14.273 km | | | Date and time: | 05/06/18, 11:04 |

Figure: 9.30c
Viewpoint 10: Sgurr a Mhuillinn



Baseline photograph

This image provides landscape and visual context only



Wireline drawing

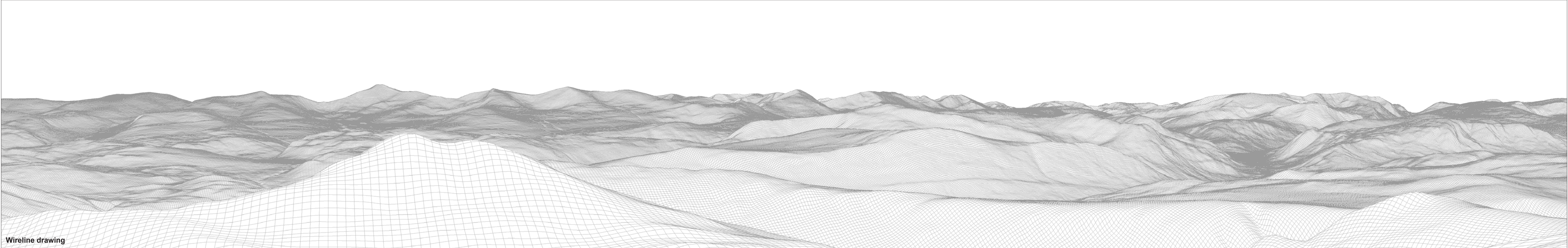
| | | |
|--|---|---|
| OS reference: 226466 E 855740 N | Horizontal field of view: 90° (cylindrical projection) | Camera: Canon EOS 5D Mark II |
| Eye level: 877.6 m AOD | Principal distance: 522 mm | Lens: 50mm (Canon EF 50mm f/1.4) |
| Direction of view: 116° | | Camera height: 1.5 m AGL |
| Nearest turbine: 14.273 km | | Date and time: 05/06/18, 11:04 |

Figure: 9.30d
Viewpoint 10: Sgurr a Mhuillinn



Baseline photograph

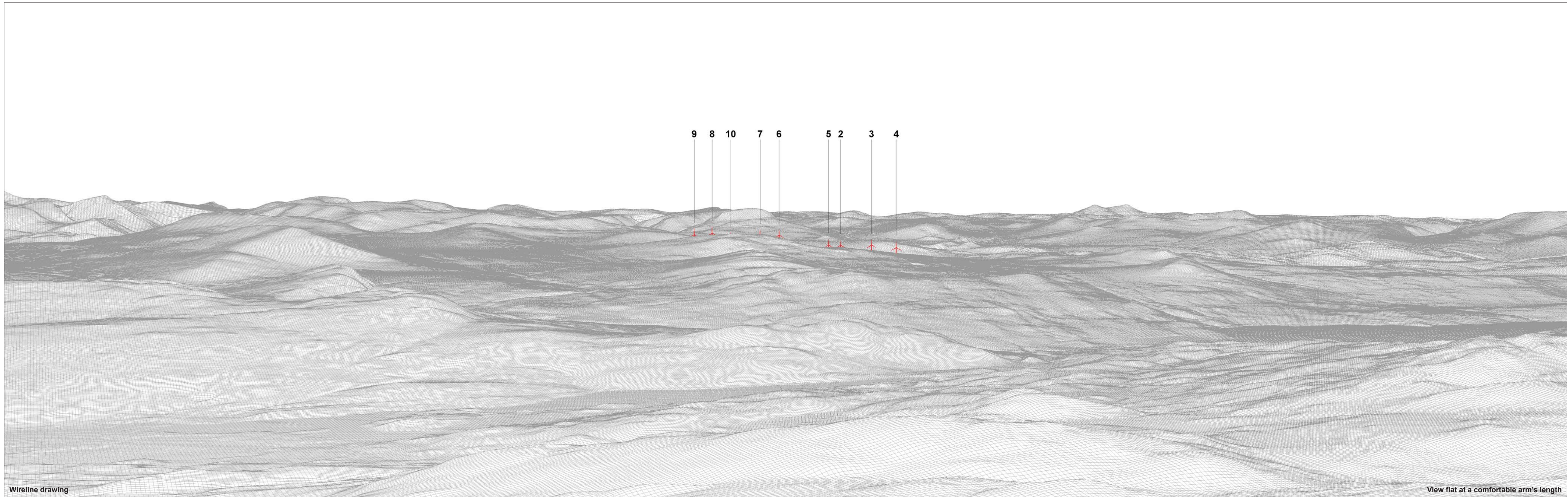
This image provides landscape and visual context only



Wireline drawing

| | | |
|--|---|---|
| OS reference: 226466 E 855740 N | Horizontal field of view: 90° (cylindrical projection) | Camera: Canon EOS 5D Mark II |
| Eye level: 877.6 m AOD | Principal distance: 522 mm | Lens: 50mm (Canon EF 50mm f/1.4) |
| Direction of view: 206° | | Camera height: 1.5 m AGL |
| Nearest turbine: 14.273 km | | Date and time: 05/06/18, 11:04 |

Figure: 9.30e
Viewpoint 10: Sgurr a Mhuillinn



Wireline drawing

View flat at a comfortable arm's length

OS reference: 226466 E 855740 N
Eye level: 877.6 m AOD
Direction of view: 26°
Nearest turbine: 14.273 km

Horizontal field of view: 53.5° (planar projection)
Principal distance: 812.5 mm
Paper size: 841 x 297 mm (half A1)
Correct printed image size: 820 x 260 mm

Camera: Canon EOS 5D Mark II
Lens: 50mm (Canon EF 50mm f/1.4)
Camera height: 1.5 m AGL
Date and time: 05/06/18, 11:04

Figure: 9.30f
Viewpoint 10: Sgurr a Mhuillinn



Photomontage

View flat at a comfortable arm's length

| | | |
|--|--|---|
| OS reference: 226466 E 855740 N | Horizontal field of view: 53.5° (planar projection) | Camera: Canon EOS 5D Mark II |
| Eye level: 877.6 m AOD | Principal distance: 812.5 mm | Lens: 50mm (Canon EF 50mm f/1.4) |
| Direction of view: 26° | Paper size: 841 x 297 mm (half A1) | Camera height: 1.5 m AGL |
| Nearest turbine: 14.273 km | Correct printed image size: 820 x 260 mm | Date and time: 05/06/18, 11:04 |

Figure: 9.30g
Viewpoint 10: Sgurr a Mhuillinn